

Küche
ca. 18,59m²

Treppenhaus
ca. 9,23m²

Abstellen 1
ca. 1,30m²

Abstellen 2
ca. 1,29m²

Terrasse (1/2)
ca. 12,02m²

ca. 171m²

Flur
ca. 16,28m²

Wohnen/ Essen
ca. 30,01m²

Kind 1
ca. 16,25m²

Bad 1
ca. 7,76m²

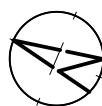
Kind 3/ Arbeiten
ca. 12,16m²

Schlafen
ca. 21,89m²

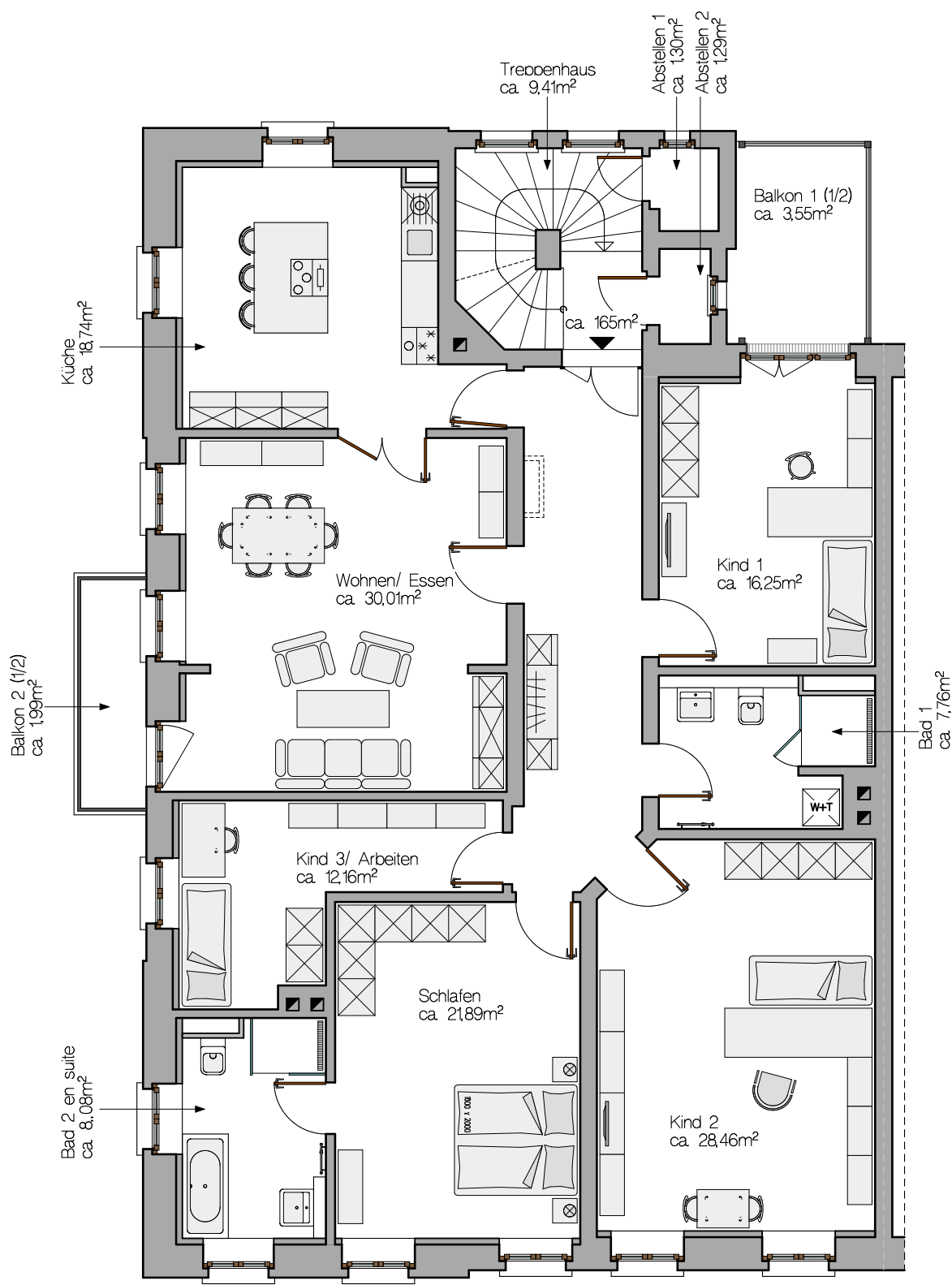
Bad 2 en suite
ca. 8,08m²

Kind 2
ca. 28,46m²

Heinrich-Zille-Straße 5
in Altenburg



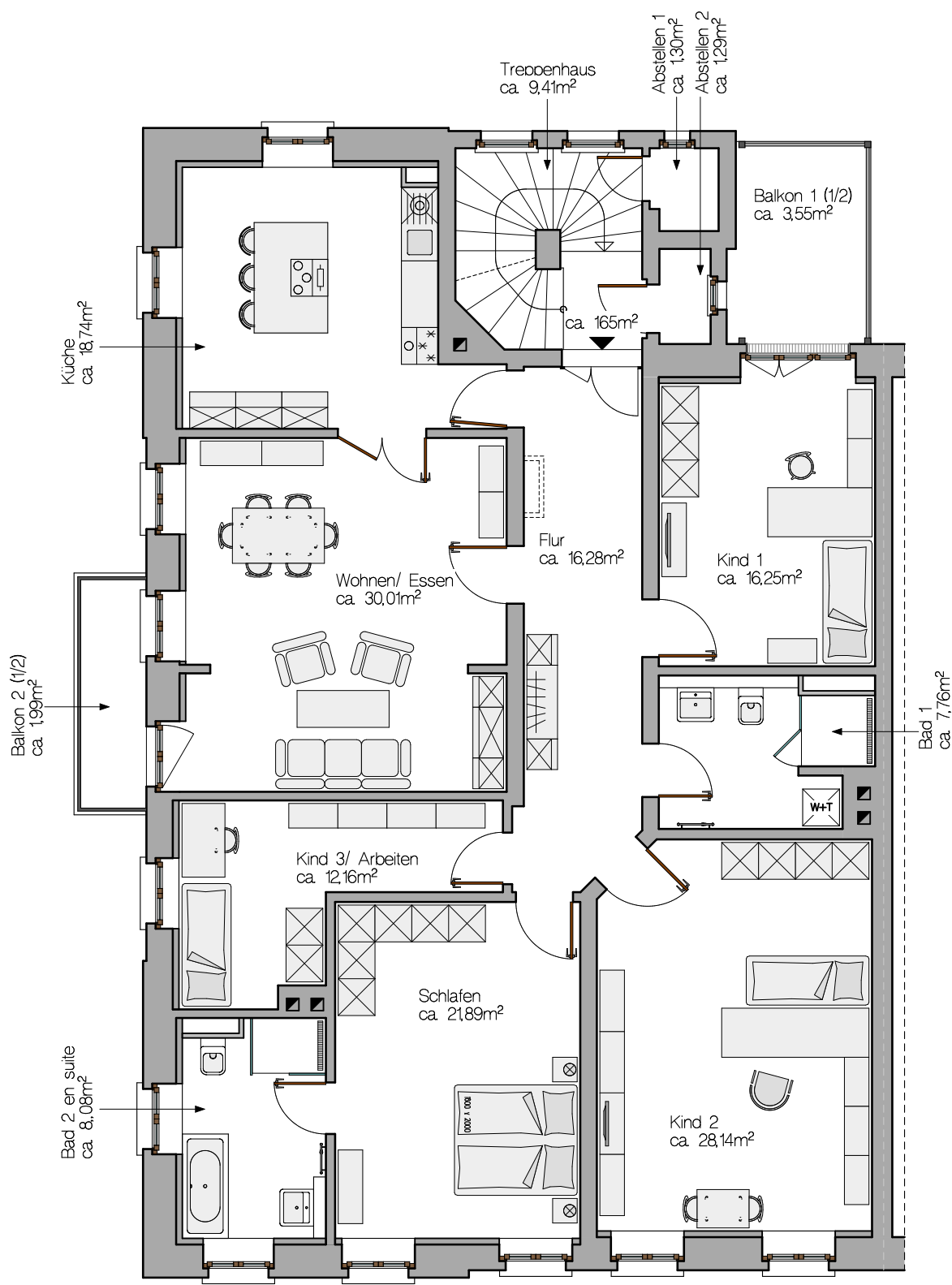
Wohnung 1
Erdgeschoss
19.11.2021



Heinrich-Zille-Straße 5
in Altenburg



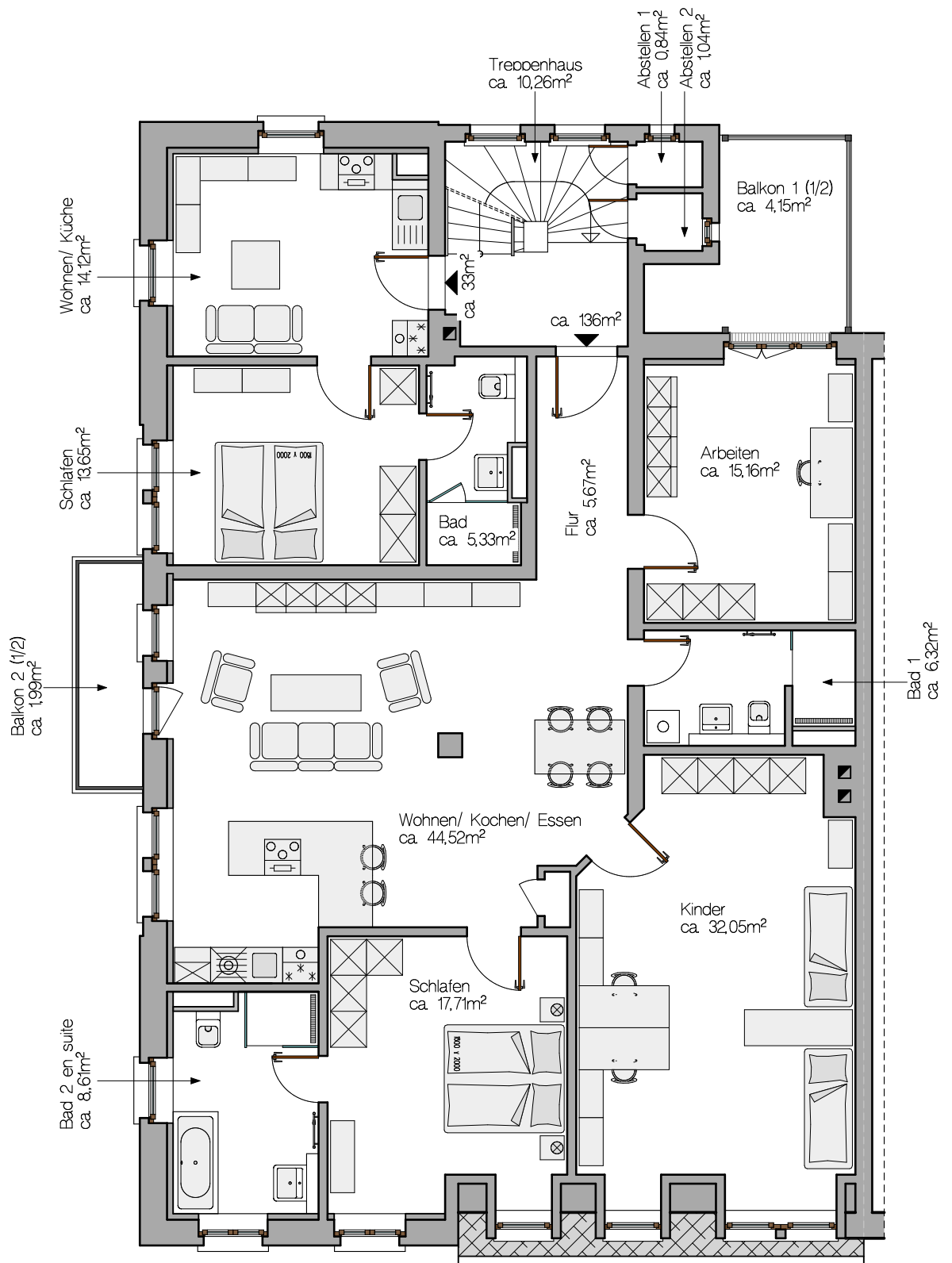
Wohnung 2
1.Obergeschoss
19.11.2021



Heinrich-Zille-Straße 5
in Altenburg

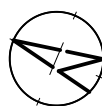


Wohnung 3
2.Obergeschoss
19.11.2021

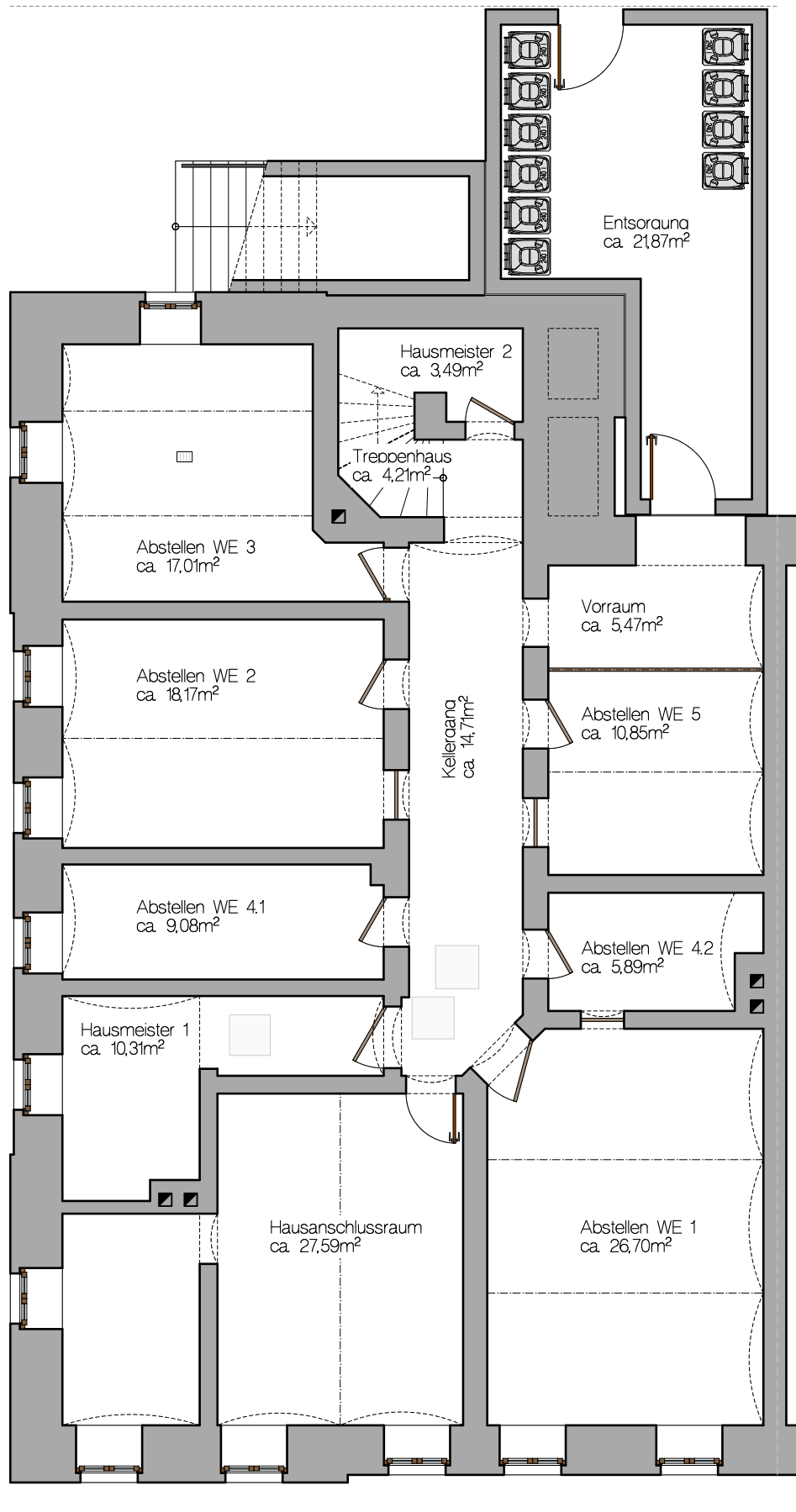


Variante 2

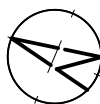
Heinrich-Zille-Straße 5
in Altenburg



Wohnung 4+5
3.Obergeschoss
19.11.2021



Heinrich-Zille-Straße 5
in Altenburg



Abstellen
Kellergeschoss
19.11.2021